

BUILDING TOGETHER

Welcome to the fifth issue of our Supply Chain Newsletter, bringing you highlights from across the business.

September 2023



2022 CDP Supplier Engagement Leadership

We are pleased to confirm that Morgan Sindall has been presented with the CDP (formally Carbon Disclosure Project) Supplier Engagement Award for Leadership again in 2022.

This means that the Group sits amongst the top 8% of companies assessed for supplier engagement on climate change, based on our last CDP disclosure.

LOVELL

A MORGAN SINDALL GROUP COMPANY

2022 Carbon Emissions

Through our commitment to reach our net zero 2030 targets, we have been successful in achieving a 4% reduction in our total carbon emissions in 2022 despite the business growing substantially.

This continuous reduction in our emissions that we have been able to achieve year after year is evidence of Lovell's commitment to building a more sustainable future. Through behavioural changes, trials, and the

introduction of new technologies, we are working hard to ensure that we continue this trend in 2023.

With our expected business growth, we are aware of the challenges that lie ahead but we

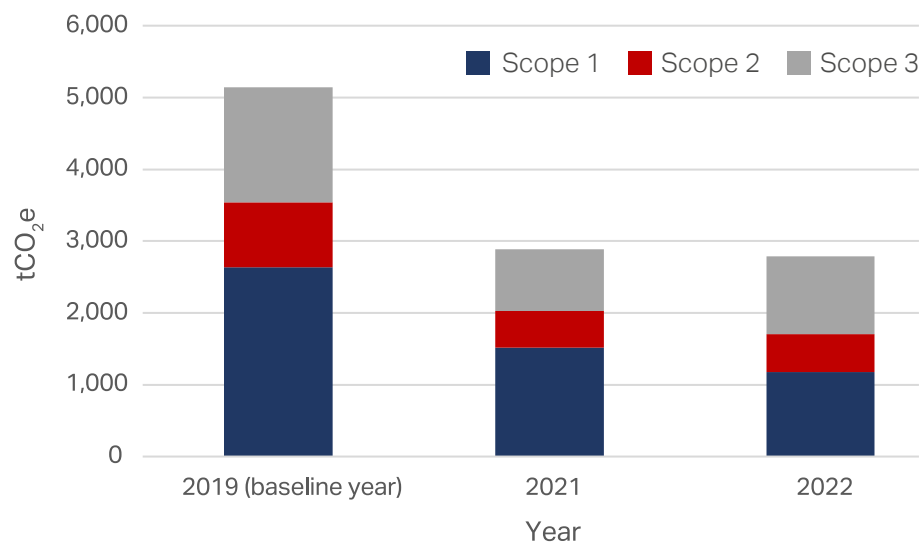
remain committed to reaching our short-term 2025 target and reducing our impacts on the environment.

Please continue to help us meet the target!

2019
Scope 1 - 2,637
Scope 2 - 903
Scope 3 - 1,604

2021
Scope 1 - 1,520
Scope 2 - 505
Scope 3 - 861

2022
Scope 1 - 1,181
Scope 2 - 528
Scope 3 - 1,079



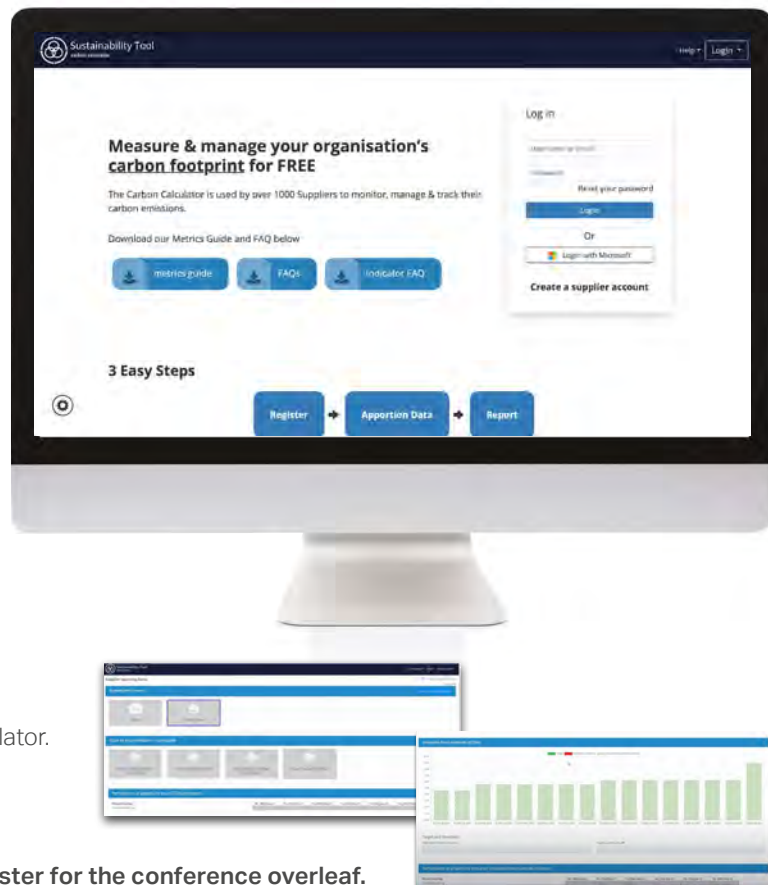
Your Carbon Emissions

We have made real progress with reducing our emissions from direct sources (fuel, electric, water, gas, waste and business mileage) in recent years but, in common with other house builders, we need to start measuring the emissions of our supply chain.

This does mean we need you to report your emissions - fortunately we have a free tool to help you, available via the Supply Chain Sustainability School Carbon Calculator.

The calculator can be found [here](#)

For more information, please register for the conference overleaf.



HVO Utilisation Update

HVO is a direct alternative to diesel for bulk fuel that Lovell adopted in 2021.

We have been continuing to increase our use of HVO throughout 2022 and 2023, so around 95% of our bulk fuel is now HVO.

This has created a significant reduction in our emissions, with an approximate saving of 2,500tCO₂e in 2022 compared to if we had used diesel.

SUPPLY CHAIN SUSTAINABILITY

SCHOL

A Greener Supply Chain: The Homebuilders' View

Oct 11: 10:00 - 12:00

Book now for this free virtual conference - limited places available!



Supply Chain Sustainability School (SCSS)

The Supply Chain Sustainability School (SCSS) are hosting a virtual conference, **A Greener Supply Chain - The Housebuilders View** on 11th October 10:00-12:00.

The conference is designed to prepare your business for your housebuilding clients needs:

- Understand the ambition of the homes industry in sustainability, drivers towards net zero and the need to act now
- Gain an insight into how other companies in the supply chain have responded in the drive to net zero, and the opportunities of doing so
- Hear from major UK housebuilders on their sustainability strategies and targets, and how you can support them to deliver these
- Take away actions to help you deliver more sustainably on your projects

As one of our key suppliers, we would love for you to attend! There are speakers from Barrett Developments, Bellway, Berkeley Group, Crest Nicholson, Keepmoat, Lovell, Redrow, Taylor Wimpey and Vistry Group.

You can register for your free place [here](#)

Science Based Targets (SBTi)

We have had our approach to averting the climate emergency validated again by the SBTi. This puts us in the top 25% of companies globally!

Given our growth plans, there is a lot of effort required so we can remain on track and at the top of our sector.

Remember we need to be net zero operationally in 2030 and fully net zero in 2045, the SBTi team have confirmed that our company's Scope 1, 2, and 3 long-term target ambition are aligned with the SBTi's 1.5°C mitigation pathways for reaching net-zero by 2050 or sooner.



SCIENCE
BASED
TARGETS

DRIVING AMBITIOUS CORPORATE CLIMATE ACTION



edie Award

We are proud to announce that we have been awarded the 'Net-Zero Innovation of the Year' prize at this year's edie Awards, for our partnership entry based on our partnership with the Blenheim Estate in creating new woodlands.

The edie Awards is the world's largest sustainable business awards scheme and is one of the highest accolades for sustainability in the corporate sector.

This achievement only inspires us to continue working alongside our colleagues, customers and supply chain to further enhance communities and make the world a better place as we strive towards our own net zero by 2030 goals.





Supply Chain Planting the Future

In 2022 Lovell staff spent a day helping to plant some of the 270,000 trees at the Morgan Sindall Woodlands at Blenheim Estate. However, due to the summer drought, a proportion of our saplings died, and so needed to be replanted in 2023.

We thought this would be a great opportunity to get members of our supply chain involved and show them some of the great work we are carrying out as we strive towards building a more sustainable future.

We offered some key supply chain partners the opportunity to spend a day in Oxfordshire, helping to plant some trees, exploring the woodlands and finding out about the estate's future plans and the positive impacts it will have. The day concluded with a tour of Blenheim Palace and a wonderful lunch in the orangery.



Morgan Sindall **RSPB**

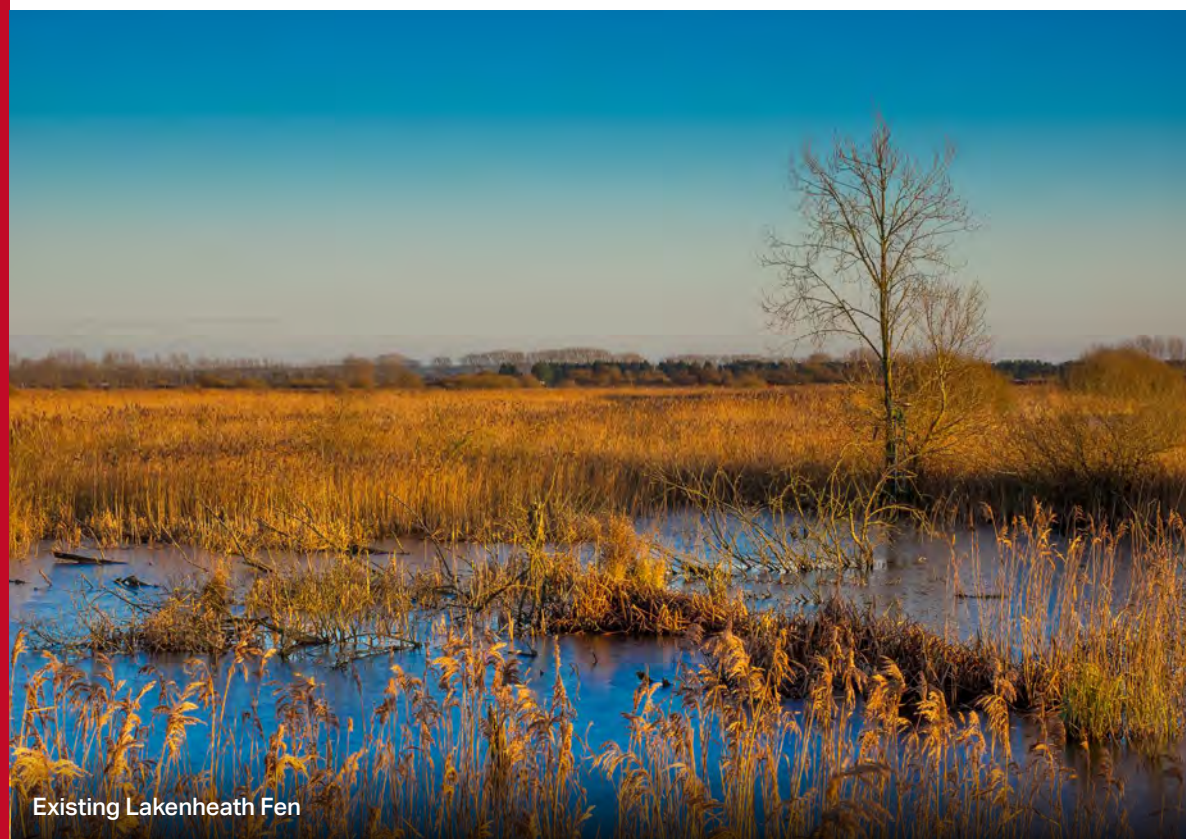
Over a third of global wetlands have disappeared since 1970, a disaster as they represent some of the most biodiverse habitats and carbon-rich ecosystems in the UK.



Morgan Sindall Group, lead by Lovell, have worked with the Royal Society for the Protection of Birds (RSPB) to purchase 54 hectares of land to create a peat-rich, biodiverse wetland for wildlife, the climate and the community at the RSPB's Lakenheath Fen reserve in Norfolk.

The reserve is also home to a number of threatened bird

species including the previously near extinct bittern and the crane, a bird that disappeared from the UK about 400 years ago and successfully returned to Lakenheath in 2009. This land will allow the RSPB to extend the habitat they've already created for a range of birds, in addition to protecting the peat in the soil to help to sequester carbon.



Existing Lakenheath Fen



The Great North Bog currently showing damaged, bare peat areas

The Great North Bog

As Morgan Sindall Group, we have partnered with the North Pennines AONB (Area of Outstanding Natural Beauty) as another one of our innovative approaches to preventing and reducing emissions.

This project will see the restoration of 300 hectares of peatland in the North Pennines AONB, UNESCO Global Geopark, the Yorkshire Dales National Park, and the surrounding upland areas.

Peatlands are classified as rare global habitats as they cover 3% of the Earth's surface but store 33% of all terrestrial carbon, double that of forests. These biodiversity hotspots play a huge role in climate change.

However damaged peatlands release the carbon that was once stored. This project aims to re-wet The Great North Bog as part of an intense restoration process to allow the peatlands to thrive.

If you have any queries, please contact either
Rob Worboys, Head of Procurement and Sustainability at rob.worboys@lovell.co.uk,
Gemma Tovey, Sustainability Lead at gemma.tovey@lovell.co.uk or
Courtney Cummings, Sustainability Coordinator at courtney.cummings@lovell.co.uk

Lovell Partnerships Limited
Marston Park, Tamworth B78 3HN
T. 01827 305 600

lovell.co.uk

LOVELL

A MORGAN SINDALL GROUP COMPANY